

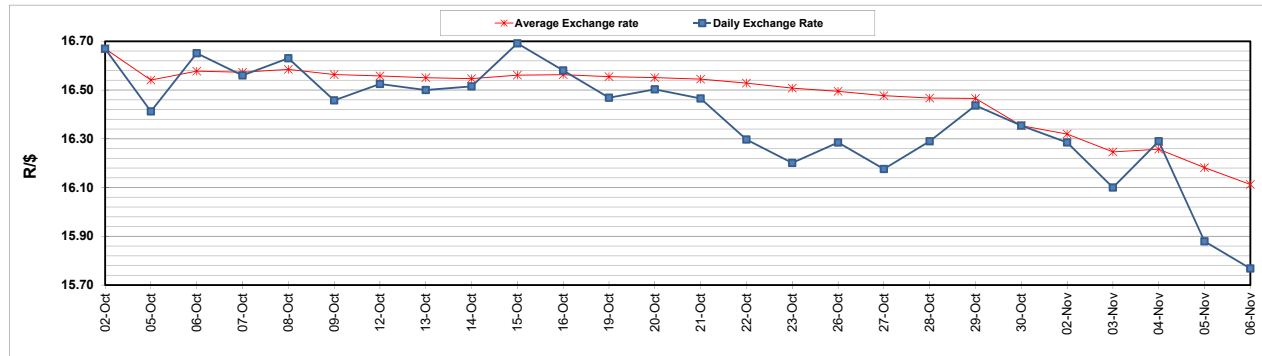
	PETROL 95 ULP	PETROL 93 ULP & LRP	DIESEL 0.05%	DIESEL 0.005%	ILL. PAR.
GAUTENG PUMP PRICE (SA c/l) AS FROM 04/11/2020	1,459.000	1,439.000	-	-	-
WHOLESALE PRICE (SA c/l) AS FROM 04/11/2020	-	-	1,225.560	1,227.960	655.828
SINGLE NATIONAL MAXIMUM RETAIL PRICE	-	-	-	-	818.000
BASIC FUEL PRICE - 06/11/2020 (SA c/l)	468.609	458.659	460.817	462.741	446.999
PRESS RELEASE CONTRIBUTION TO BFP 04/11/2020 - 06/11/2020 (SA c/l)	506.470	496.470	474.630	477.030	451.128
UNIT OVER/(UNDER) RECOVERY - 06/11/2020 (SA c/l)	37.861	37.811	13.813	14.289	4.129
AVERAGE BASIC FUEL PRICE 30/10/2020 - 06/11/2020	467.055	459.388	458.878	462.282	442.503
AVERAGE UNIT OVER/(UNDER) RECOVERY 30/10/2020 - 06/11/2020	52.915	50.583	21.753	20.248	1.125

ANALYSIS MOVEMENT OF AVERAGE OVER/(UNDER) RECOVERY

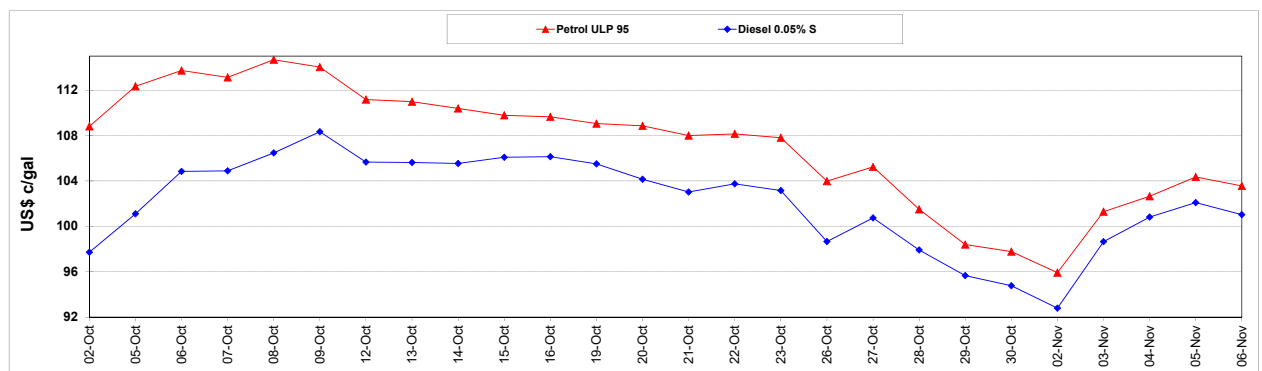
	PETROL 95	PETROL 93	DIESEL 0.05%	DIESEL 0.005%	ILL. PAR.
- MOVEMENT IN INTERNATIONAL PRODUCT PRICES	42.683	40.518	11.699	10.120	(8.569)
- MOVEMENT IN EXCHANGE RATE	10.232	10.064	10.053	10.128	9.694
AVERAGE UNIT OVER/(UNDER) RECOVERY 30/10/2020 - 06/11/2020	52.915	50.583	21.753	20.248	1.125

R/\$ EXCHANGE RATE - (R/\$15.7678 - 06/11/2020)

EXCHANGE RATE USED IN BASIC FUEL PRICE



INTERNATIONAL PRODUCT PRICES OF BASKET USED IN BASIC FUEL PRICE



BASIC FUEL PRICE IN SA CENTS PER LITRE

